

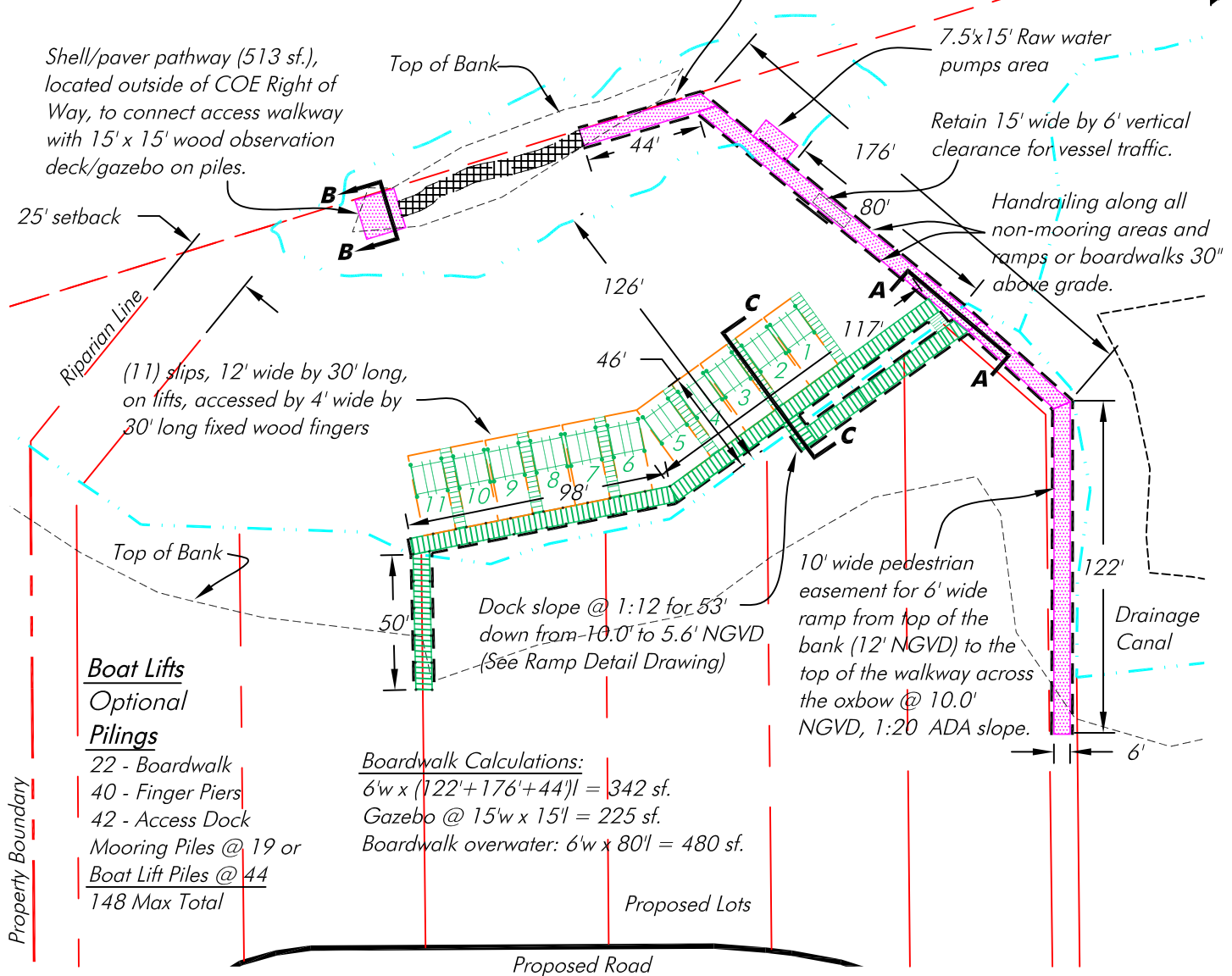
SECTION: 28
 TOWNSHIP: 43 S
 RANGE: 28 E

Shoreline defined by AWL elevation of 3.1' NGVD is 531 lf. on the island and 383 lf. on the mainland shoreline for a total of 914 lf. for purposes of calculating impacts to sovereign state lands. This does not include the drainage canal shoreline (274 lf.) included to establish total number of slips @ 11 (1:100 ratio)



Caloosahatchee River

Fixed wood elevated boardwalk to ramp up on 1:12 slope, over last 44' section to the final grade of the island (10.8' NGVD).



Boat Lifts

Optional

Pilings

- 22 - Boardwalk
- 40 - Finger Piers
- 42 - Access Dock
- Mooring Piles @ 19 or
- Boat Lift Piles @ 44
- 148 Max Total

Boardwalk Calculations:

$6'w \times (122' + 176' + 44')l = 342 \text{ sf.}$
 Gazebo @ 15'w x 15'l = 225 sf.
 Boardwalk overwater: $6'w \times 80'l = 480 \text{ sf.}$

Proposed Dock and Boardwalk Plan

SCALE: 1" = 60'

Note - Depth contours reference Average Water Line (3.1' NGVD) per site depths represented by Rhodes & Rhodes Land Surveying, dated June, 22, 2012..

HANS J.M. WILSON
 REGISTERED PROFESSIONAL ENGINEER
 FLORIDA REGISTRATION NO. 39680
 DATE: September 13, 2014 11:32:09 a.m.
 Drawing: RIVERLAND1MASTER.DWG

PERMIT USE ONLY, NOT FOR CONSTRUCTION

HANS WILSON & ASSOC., INC.
 1938 Hill Ave. Ft. Myers, Florida 33901
 Tel: 239-334-6870 Fax: 239-334-7810
 MARINE and ENVIRONMENTAL CONSULTANTS

hjmw
 9-13-14

River Landings

SHEET